



Dean Ryle Street, Westminster  
London SW1P

GARTON JONES.COM





Dean Ryle Street, Westminster  
London, SW1P

GARTON JONES.COM

49 Marsham Street Sales +44 (0) 20 7340 0480  
London westminster@gartonjones.com  
SW1P 3DP www.gartonjones.com

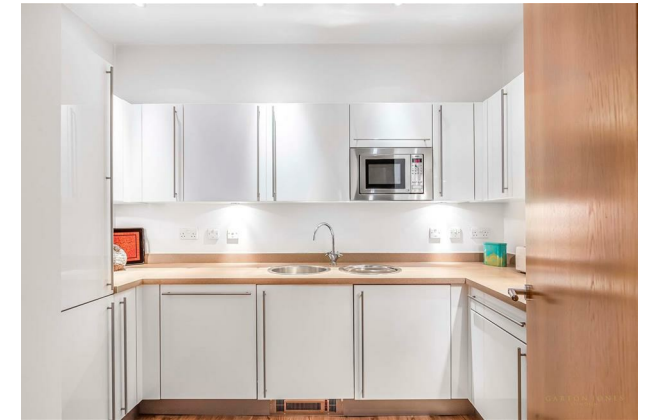
£795 Per Week

We are pleased to offer this remarkable one bedroom apartment available to let on the 5th floor of this sought after development close to the banks of the River Thames. The accommodation offers generous proportions and measures at 774 Square Feet (71.9 Sq.M) with high ceilings throughout offered furnished. Internal living space comprises of a separate modern kitchen, reception room with superb views onto St Johns Gardens, modern bathroom, a good size bedroom with ample fitted wardrobes and views onto the square. Further benefits include wood flooring, double glazing and a secure underground parking. Residents of Westminster Green benefit from a 24 hour concierge, lavish lobby area, business suite and a gymnasium. You will be within walking distance to the amenities of Horseferry Road and Victoria Street which include many shops, a Curzon Cinema and a host of new restaurants. The development is also located next door to the international headquarters of Burberry and the Westminster Hotel. The transport links of St James's Park, Westminster and Victoria are all within walking distance. Dean Ryle Street is convenient for access to many of the renowned local landmarks which include the Houses of Parliament, the River Thames and Westminster Abbey.

\*\*There is a separate storage room available under separate negotiation at £30 per week

EPC Rating: C (72)  
Council Tax Band F (London Borough of Westminster)  
Deposit 5 Weeks  
Minimum Term 12 Months

- Exceptional One Bedroom Apartment
- 5th Floor (Lift)
- 774 Square Feet (71.9 Sq.M)
- Reception Room
- Modern Integrated Kitchen
- Bathroom
- Secure Underground Parking
- 24 Hour Concierge & Resident's Gymnasium
- Close to Local Amenities Including Shops and Restaurants
- Walking Distance to St James` Park & Westminster Tube Links

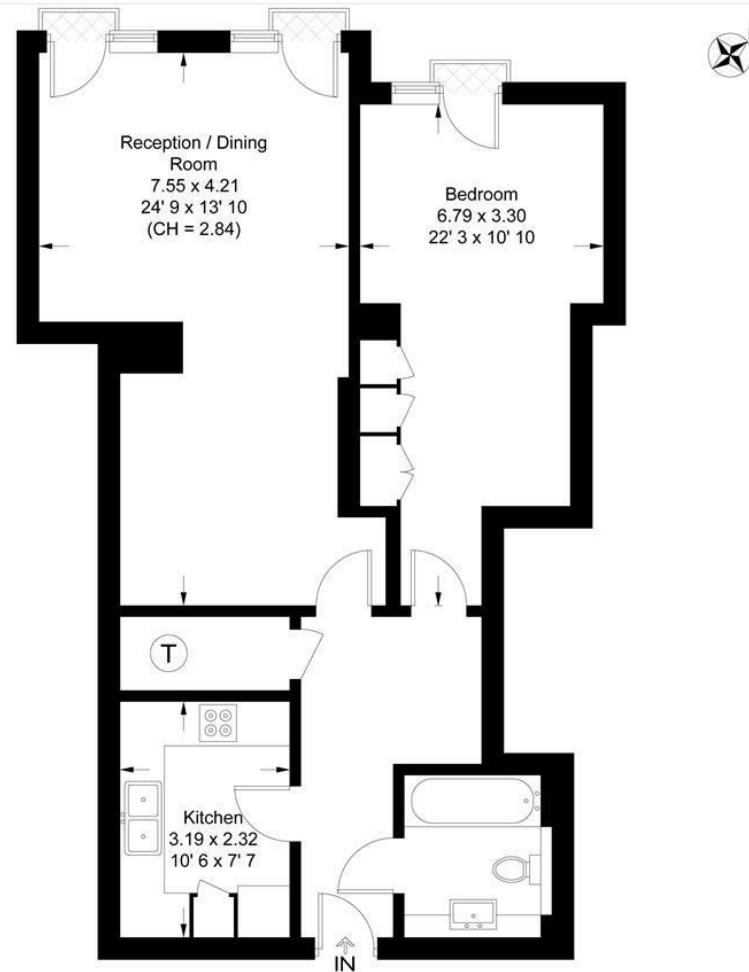


EPC certificate available on request.

## Westminster Green

Approximate Gross Internal Area = 774 sq ft / 71.9 sq m

GARTON JONES  
LONDON



Fifth Floor

This plan is not to scale and must be used as layout guidance only. All measurements and areas are approximate and should not be relied upon to provide accurate information. This plan must not be relied upon when making property valuations, design considerations or any other such relevant decisions. We accept no responsibility or liability (whether in contract, tort or otherwise) in relation to any loss whatsoever arising from or in connection with any use of this plan or the adequacy, accuracy or completeness of it or any information within it.



